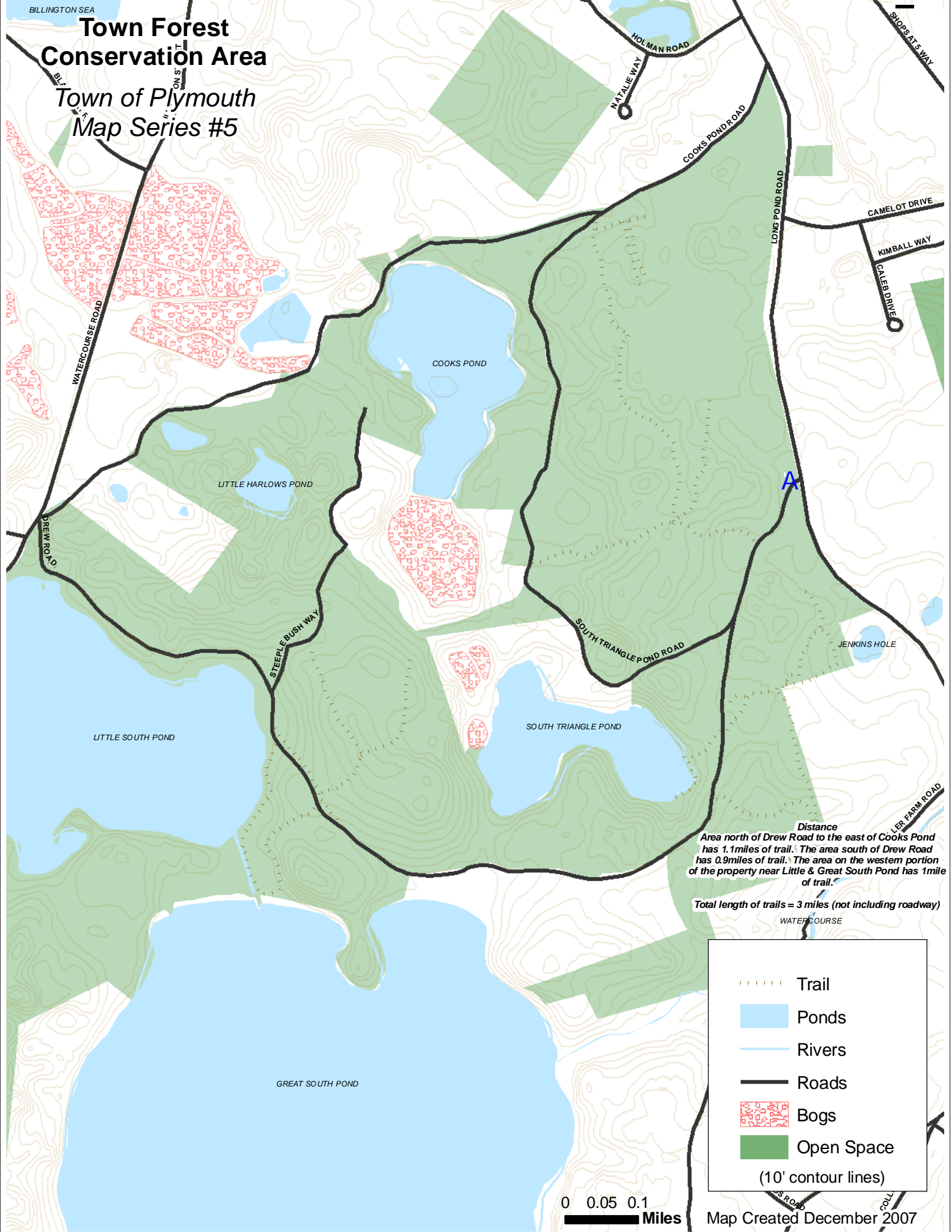


BILLINGTON SEA

Town Forest Conservation Area


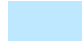




Town of Plymouth

Map Series #5



Distance
Area north of Drew Road to the east of Cooks Pond has 1.1miles of trail. The area south of Drew Road has 0.9miles of trail. The area on the western portion of the property near Little & Great South Pond has 1mile of trail.

Total length of trails = 3 miles (not including roadway)

-  Trail
 -  Ponds
 -  Rivers
 -  Roads
 -  Bogs
 -  Open Space
- (10' contour lines)

0 0.05 0.1
Miles

Map Created December 2007