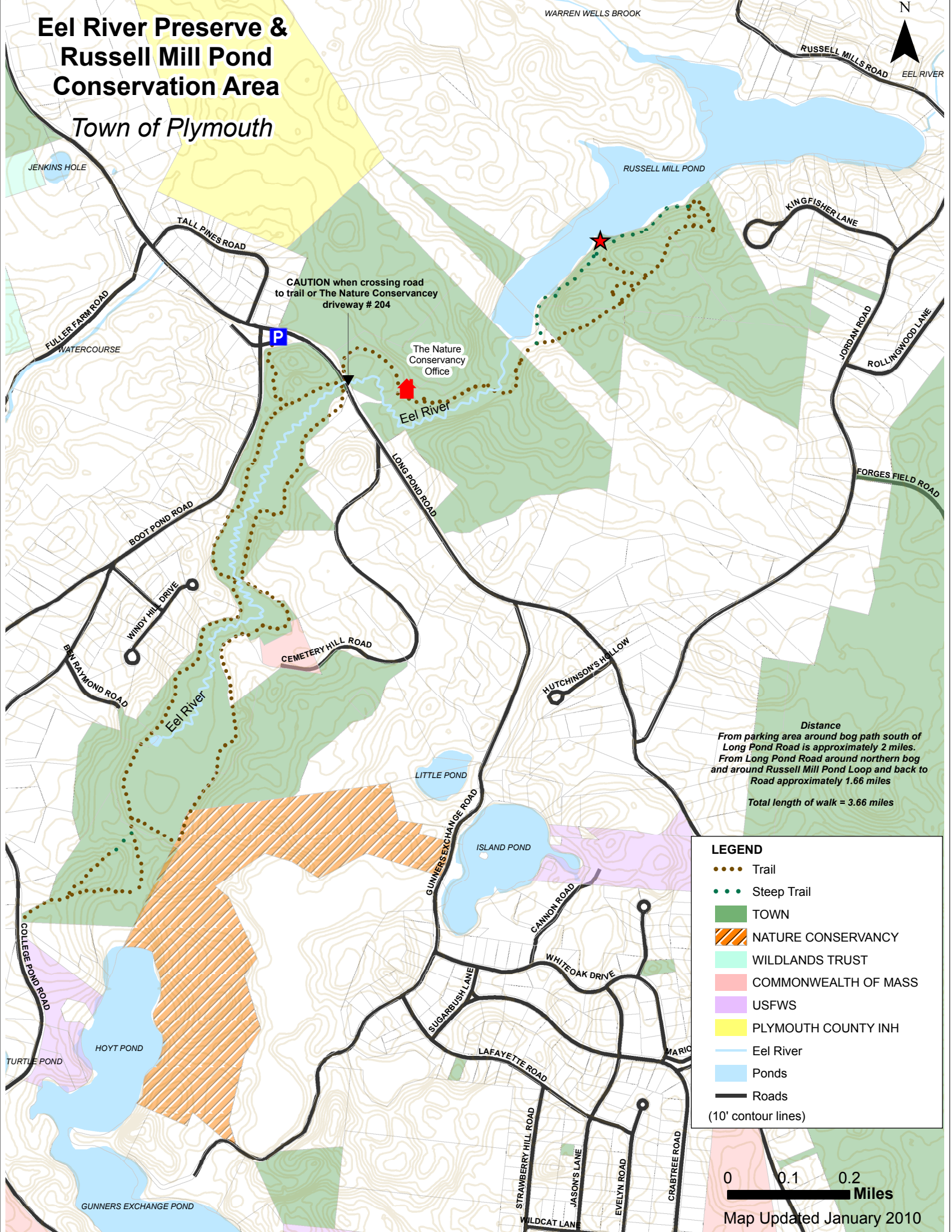


Eel River Preserve & Russell Mill Pond Conservation Area

Town of Plymouth



CAUTION when crossing road to trail or The Nature Conservancy driveway # 204

The Nature Conservancy Office

Distance
 From parking area around bog path south of Long Pond Road is approximately 2 miles.
 From Long Pond Road around northern bog and around Russell Mill Pond Loop and back to Road approximately 1.66 miles
 Total length of walk = 3.66 miles

LEGEND

- Trail
- Steep Trail
- TOWN
- NATURE CONSERVANCY
- WILDLANDS TRUST
- COMMONWEALTH OF MASS
- USFWS
- PLYMOUTH COUNTY INH
- Eel River
- Ponds
- Roads
- (10' contour lines)

0 0.1 0.2 Miles
 Map Updated January 2010