

**TOWN OF PLYMOUTH CAPITAL IMPROVEMENT PLAN REQUEST FORM
FY25 ANNUAL TOWN MEETING REQUEST FORM**

Department: SEWER DIVISION		SIX FIVE
Project Title and Description: Vehicle #52 Ford F250 replacement	Total Project Cost:	\$88,000.00

Department/Division Head: Doug Pinard Wastewater Superintendent

Cost estimate was developed: Internally ☒ Externally ☐

Basis of Estimated Costs (attach additional information if available)			If project has impact on 5 Year Plan and future operating budgets, insert estimated amounts.		
Capital:	Cost	Comments	Fiscal Year:	Capital	O & M
<i>Planning and Design</i>			<i>FY26</i>		
<i>Labor and Materials</i>			<i>FY27</i>		
<i>Administration</i>			<i>FY28</i>		
<i>Land Acquisition</i>			<i>FY29</i>		
<i>Equipment</i>	\$73,000.00		<i>FY30</i>		
<i>Other</i>					
<i>Contingency</i>	\$15,000.00				
Total Capital	\$88,000.00				

Possible sources and amounts of funding, if known: _____

Project Justification and Objective: This request is to replace service Truck #52 and will be operated by sewer department staff. The object of this replacement is to provide a quick response vehicle for emergencies, such as sewer repairs and SSO prevention.

For Capital Project Requests:

Will this project be phased over more than one fiscal year? If yes, enter it on the next 5 Year Plan Yes ☐ No ☒
Can this project be phased over more than one fiscal year? Yes ☐ No ☒

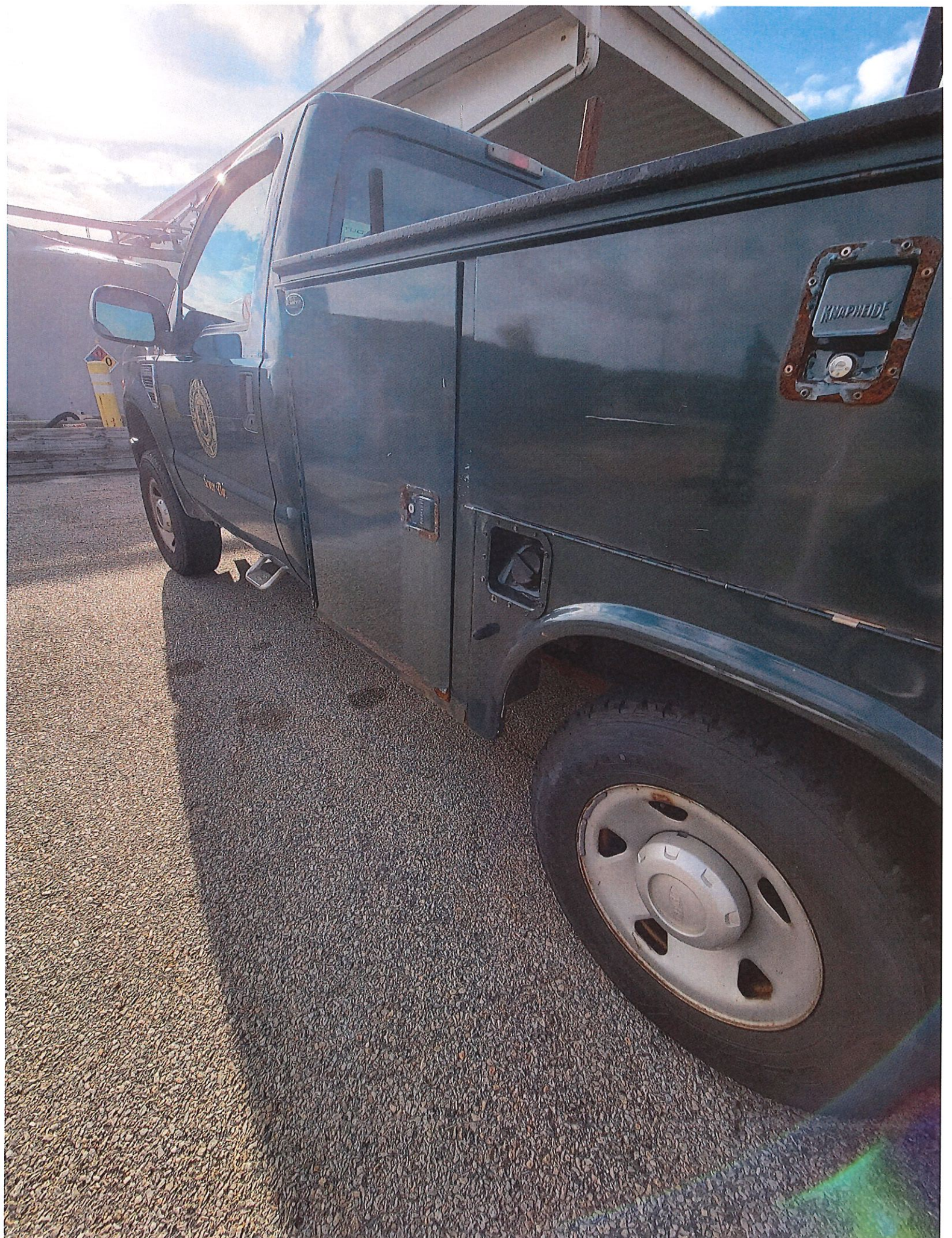
For Capital Equipment Requests:

☒ Check if equipment requested is replacement and enter the year, make & model, VIN and present condition of existing equipment

2008 Ford F250 VIN# 1FDNF21548EC87430 Currently this vehicle is rotted and has mechanical issues. The utility body floor is rotted, cabinet doors and rocker panels on both cab doors are rotted through. The exhaust manifolds are warped and need to be replaced. The cost of maintaining this vehicle, fixing mechanical issues and safety concerns are not worth the age and condition of this vehicle.

Attach additional information, estimates, or justification.





The original
TOMMY GATE®
hydraulic lift
www.tommypgate.com
1-800-LIFTGATE

WARNING
Read and understand all instructions before using this equipment.
Do not use this equipment if you are under the influence of alcohol or drugs.
Do not use this equipment if you are fatigued or tired.
Do not use this equipment if you are wearing loose clothing or jewelry.
Do not use this equipment if you are not properly trained.
Do not use this equipment if you are not wearing your seat belt.
Do not use this equipment if you are not wearing your safety glasses.
Do not use this equipment if you are not wearing your hard hat.
Do not use this equipment if you are not wearing your safety shoes.
Do not use this equipment if you are not wearing your safety harness.
Do not use this equipment if you are not wearing your safety netting.
Do not use this equipment if you are not wearing your safety cage.
Do not use this equipment if you are not wearing your safety fall protection.
Do not use this equipment if you are not wearing your safety communication system.
Do not use this equipment if you are not wearing your safety identification system.
Do not use this equipment if you are not wearing your safety monitoring system.
Do not use this equipment if you are not wearing your safety control system.
Do not use this equipment if you are not wearing your safety shutdown system.
Do not use this equipment if you are not wearing your safety emergency stop system.
Do not use this equipment if you are not wearing your safety reset system.
Do not use this equipment if you are not wearing your safety lockout system.
Do not use this equipment if you are not wearing your safety tagout system.
Do not use this equipment if you are not wearing your safety removal system.
Do not use this equipment if you are not wearing your safety restoration system.
Do not use this equipment if you are not wearing your safety verification system.
Do not use this equipment if you are not wearing your safety completion system.
Do not use this equipment if you are not wearing your safety final check system.
Do not use this equipment if you are not wearing your safety release system.
Do not use this equipment if you are not wearing your safety disengagement system.
Do not use this equipment if you are not wearing your safety retraction system.
Do not use this equipment if you are not wearing your safety reset system.
Do not use this equipment if you are not wearing your safety lockout system.
Do not use this equipment if you are not wearing your safety tagout system.
Do not use this equipment if you are not wearing your safety removal system.
Do not use this equipment if you are not wearing your safety restoration system.
Do not use this equipment if you are not wearing your safety verification system.
Do not use this equipment if you are not wearing your safety completion system.
Do not use this equipment if you are not wearing your safety final check system.
Do not use this equipment if you are not wearing your safety release system.
Do not use this equipment if you are not wearing your safety disengagement system.
Do not use this equipment if you are not wearing your safety retraction system.

MADE IN
THE USA

M 00522
OFFICIAL





E-450 Cutaway Super Duty 8

 **On The Lot** at Colonial Ford of Plymouth

	MSRP	\$ / 4,995
	Colonial Discount	-\$2,000
	Colonial Price	\$72,995
	Colonial Price Detailed Pricing	\$72,995

APPRAISE YOUR VEHICLE NOW

powered by  edmunds

Call Today (866) 910-2086



Exterior Color	Drivetrain
<input type="radio"/> Oxford White	RWD
Interior Color	Engine
<input type="radio"/> MEDIUM FLINT VINYL	8
Seating	VIN
2 seats	1FDXE4FN5RDD22063
Transmission	Stock Number
Automatic	N11451




Dealer Notes

Don't miss this great Ford!

It comes equipped with all the standard amenities for your driving enjoyment. Ford infused the interior with top shelf amenities, such as: variably intermittent wipers, air conditioning, and more. It features an automatic transmission, rear-wheel drive, and a powerful 8 cylinder engine.

Our sales reps are knowledgeable and professional. We'd be happy to answer any questions that you may have. Call now to schedule a test drive.

Highlighted Features

-  Wireless phone connectivity
-  Fully automatic headlights
-  Dual rear wheels

Detailed Specifications

Convenience Features

[\(+\)](#) **Suspension/Handling**[\(+\)](#) **Entertainment Features**[\(+\)](#) **Warranty**[\(+\)](#) **Seats And Trim**[\(+\)](#) **Powertrain**[\(+\)](#) **Specs And Dimensions**[\(+\)](#) **Lighting, Visibility And Instrumentation**[\(+\)](#) **Safety And Security**

KBB.com Consumer Reviews



Overall

3.8

Out of 5

A Reasonably Comfortable, Nice Performance Vehicle

4.0

By GL | Wednesday, March 27, 2019

This transit with the 3.7 L engine drives great with plenty of power for driving the hills

and mountains of east tennessee. It handles curves and street driving ok...

[Read More](#)

Fantastic In So Many Ways

5.0

By cgs | Sunday, January 02, 2022

I bought the Transit 250 high roof cargo van, 148" wheel base, medium length.

I

absolutely LOVE it in every way. I use it as a daily driver. Mileage is about...

[Read More](#)

It's Been A Great Family Van For Us!

5.0

By John M | Monday, September 06, 2021

Driven this van for 125k miles with virtually no problems. A couple recall items that

were fully paid by Ford. Great for long distance road trips and drives very...

[Read More](#)

Based on 40 consumer ratings for 2015-2023 models. | Privacy
(<https://www.kbb.com/company/privacy-policy/>)



Searches could display vehicles that have already been sold or that may no longer be available. The pricing shown is believed to be accurate, but we do not warrant or guarantee such accuracy. The prices shown above may vary from region to region, as

