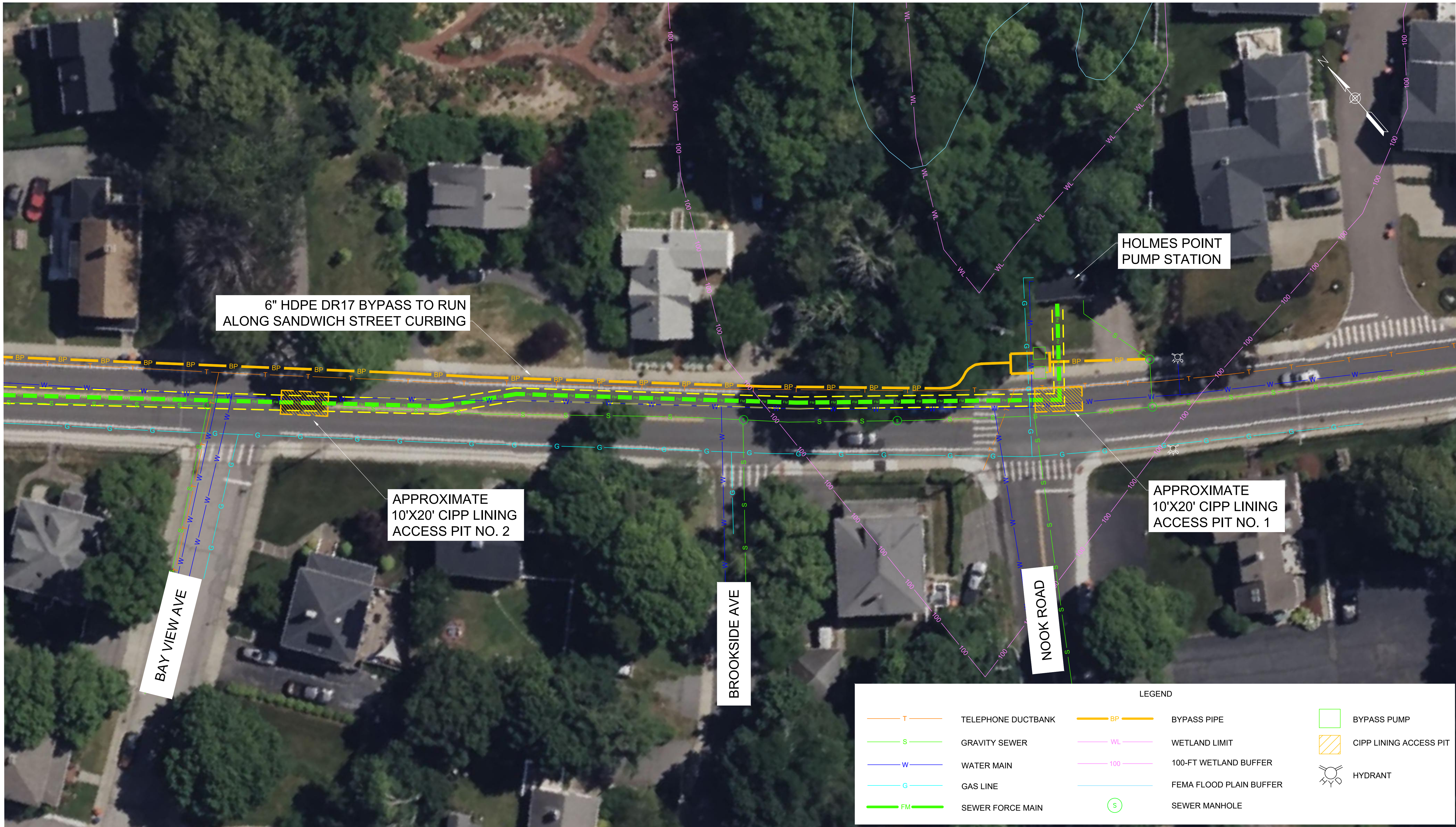
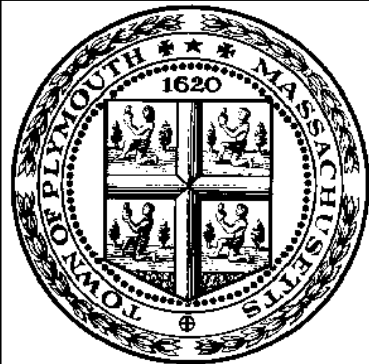


MATCH LINE

(C-5)



PLAN
SCALE: 1" = 20'



ENVIRONMENTAL
PARTNERS
— An Apex Company —

MARK	DATE	DESCRIPTION

Scale	1" = 20'
Date	JULY 2023
Job No.	196-23007845
Designed by	ATG
Drawn by	JFA
Checked by	ATG
Approved by	ZFK

THIS LINE IS ONE INCH
LONG WHEN PLOTTED AT
FULL SCALE ON A 22" X
34" DRAWING

HOLMES POINT PUMP STATION FORCE MAIN REHABILITATION
TOWN OF PLYMOUTH, MA

GIS LAYOUT VIEW OF PROPOSED CONDITIONS I

FOR REVIEW
Sheet No.

C-4

Drawing file: I:\Plymouth, 196\23007845 - Holmes Point PS Force Main Rehab\02 Design\01 Drawings\CAD\Proposed Bypass Layout.dwg Plot Date: Jul 21, 2023 12:23pm

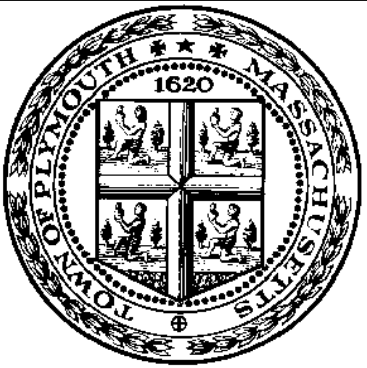


PLAN
SCALE: 1" = 20'

LEGEND			
	TELEPHONE DUCTBANK		BYPASS PIPE
	GRAVITY SEWER		WETLAND LIMIT
	WATER MAIN		100-FT WETLAND BUFFER
	GAS LINE		FEMA FLOOD PLAIN BUFFER
	SEWER FORCE MAIN		SEWER MANHOLE
			BYPASS PUMP
			CIPP LINING ACCESS PIT
			HYDRANT

(C-4)

MATCH LINE



ENVIRONMENTAL
PARTNERS
— An Apex Company —

MARK	DATE	DESCRIPTION

Scale	1" = 20'
Date	JULY 2023
Job No.	196-23007845
Designed by	ATG
Drawn by	JFA
Checked by	ATG
Approved by	ZFK

THIS LINE IS ONE INCH
LONG WHEN PLOTTED AT
FULL SCALE ON A 22" X
34" DRAWING

HOLMES POINT PUMP STATION FORCE MAIN REHABILITATION
TOWN OF PLYMOUTH, MA

GIS LAYOUT VIEW OF PROPOSED CONDITIONS II

FOR REVIEW

Sheet No.

C-5