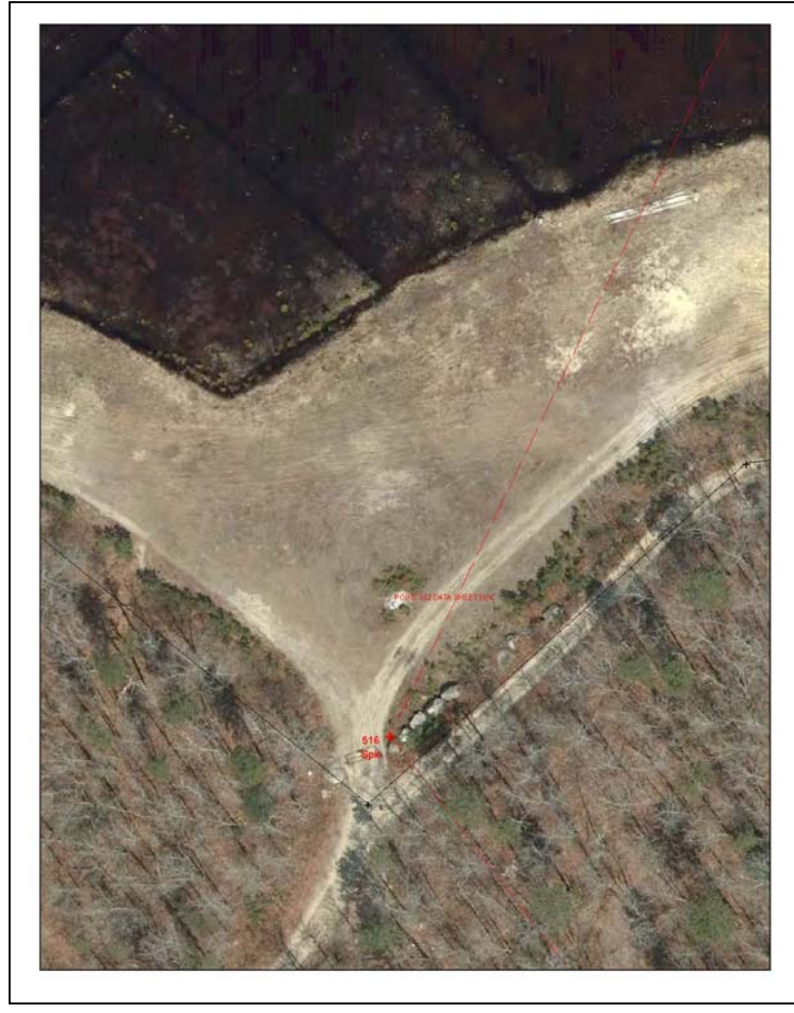


Town of Plymouth Data Sheet

Station:	Point 152	FORGES FIELD		NGS PID#		ID#	
Town:	Plymouth		Quad: Sag				
NAD83	Northerly	Easterly	NAD 27	Northerly	Easterly		
(Survey Ft)	2773705.994	919480.684	(Survey Ft)	313036.426	863178.487		
(meters)	845427.278	280258.273	(meters)	95413.693	263097.329		
						Order	
Elevation	Vert. Datum f/m	Order	Stamping:				
NAVD88	16.71/5.093		Sketch				
NAVD29	17.553/5.35		Recov. Date:	May 11, 2009			
Marked by:	Drill Hole Set						
Description:	Drill Set in large stone						
Reference Marks:							
Azimuth Data:							
Geodetic:	<pre> FILE: 50371280.09o 000040888 NGS OPUS SOLUTION REPORT ===== All computed coordinate accuracies are listed as peak-to-peak values. For additional information: www.ngs.noaa.gov/OPUS/Using_OPUS.html#accuracy USER: rfirth@townhall.plymouth.ma.us DATE: May 11, 2009 RINEX FILE: 5037128n.09o TIME: 13:13:12 UTC SOFTWARE: page5 0810.20 master28.pl 081023 START: 2009/05/08 13:22:00 EPHEMERIS: igr15305.eph [rapid] STOP: 2009/05/08 18:34:00 NAV FILE: brdc1280.09n OBS USED: 12836 / 13179 : 97% ANT NAME: TRM33429.00+GP NONE # FIXED AMB: 46 / 47 : 98% ARP HEIGHT: 1.143000 OVERALL RMS: 0.011(m) REF FRAME: NAD_83(CORS96)(EPOCH:2002.0000) ITRF00 (EPOCH:2009.3498) X: 1585550.288(m) 0.055(m) 1585549.539(m) 0.055(m) Y: -4485775.366(m) 0.016(m) -4485773.924(m) 0.016(m) Z: 4233620.062(m) 0.010(m) 4233619.991(m) 0.010(m) LAT: 41 51 18.26879 0.022(m) 41 51 18.30187 0.022(m) E LON: 289 27 59.60314 0.052(m) 289 27 59.59336 0.052(m) W LON: 70 32 0.39686 0.052(m) 70 32 0.40664 0.052(m) EL HGT: -11.489(m) 0.016(m) -12.735(m) 0.016(m) ORTHO HGT: 16.710(m) 0.030(m) [NAVD88 (Computed using GEOID03)] UTM COORDINATES STATE PLANE COORDINATES UTM (Zone 19) SPC (2001 MA M) Northing (Y) [meters] 4634822.212 845427.278 Easting (X) [meters] 372714.403 280258.273 Convergence [degrees] -1.02332536 0.64926367 Point Scale 0.99979937 0.99998264 Combined Factor 0.99980117 0.99998444 </pre>						

To convert meters to US survey feet
Multiply by 3.2808333333

	US NATIONAL GRID DESIGNATOR: 19TCG7271434822(NAD 83) BASE STATIONS USED																				
	<table border="1"> <thead> <tr> <th>PID</th> <th>DESIGNATION</th> <th>LATITUDE</th> <th>LONGITUDE</th> <th>DISTANCE(m)</th> </tr> </thead> <tbody> <tr> <td>DI0964</td> <td>FMTS MTS FRAM COOP CORS ARP</td> <td>N421800.171</td> <td>W0712630.865</td> <td>89966.5</td> </tr> <tr> <td>DI0966</td> <td>XMTS MTS FOX COOP CORS ARP</td> <td>N420350.018</td> <td>W0711501.669</td> <td>63807.9</td> </tr> <tr> <td>DI0884</td> <td>ACU6 ACUSHNET 6 CORS ARP</td> <td>N414435.676</td> <td>W0705311.720</td> <td>31870.2</td> </tr> </tbody> </table>	PID	DESIGNATION	LATITUDE	LONGITUDE	DISTANCE(m)	DI0964	FMTS MTS FRAM COOP CORS ARP	N421800.171	W0712630.865	89966.5	DI0966	XMTS MTS FOX COOP CORS ARP	N420350.018	W0711501.669	63807.9	DI0884	ACU6 ACUSHNET 6 CORS ARP	N414435.676	W0705311.720	31870.2
PID	DESIGNATION	LATITUDE	LONGITUDE	DISTANCE(m)																	
DI0964	FMTS MTS FRAM COOP CORS ARP	N421800.171	W0712630.865	89966.5																	
DI0966	XMTS MTS FOX COOP CORS ARP	N420350.018	W0711501.669	63807.9																	
DI0884	ACU6 ACUSHNET 6 CORS ARP	N414435.676	W0705311.720	31870.2																	
	NEAREST NGS PUBLISHED CONTROL POINT																				
	LW1529 P 43 N415117. W0703215. 338.6																				
	This position and the above vector components were computed without any knowledge by the National Geodetic Survey regarding the equipment or field operating procedures used.																				
Grid Azimuth:																					



To convert meters to US survey feet
Multiply by 3.280833333